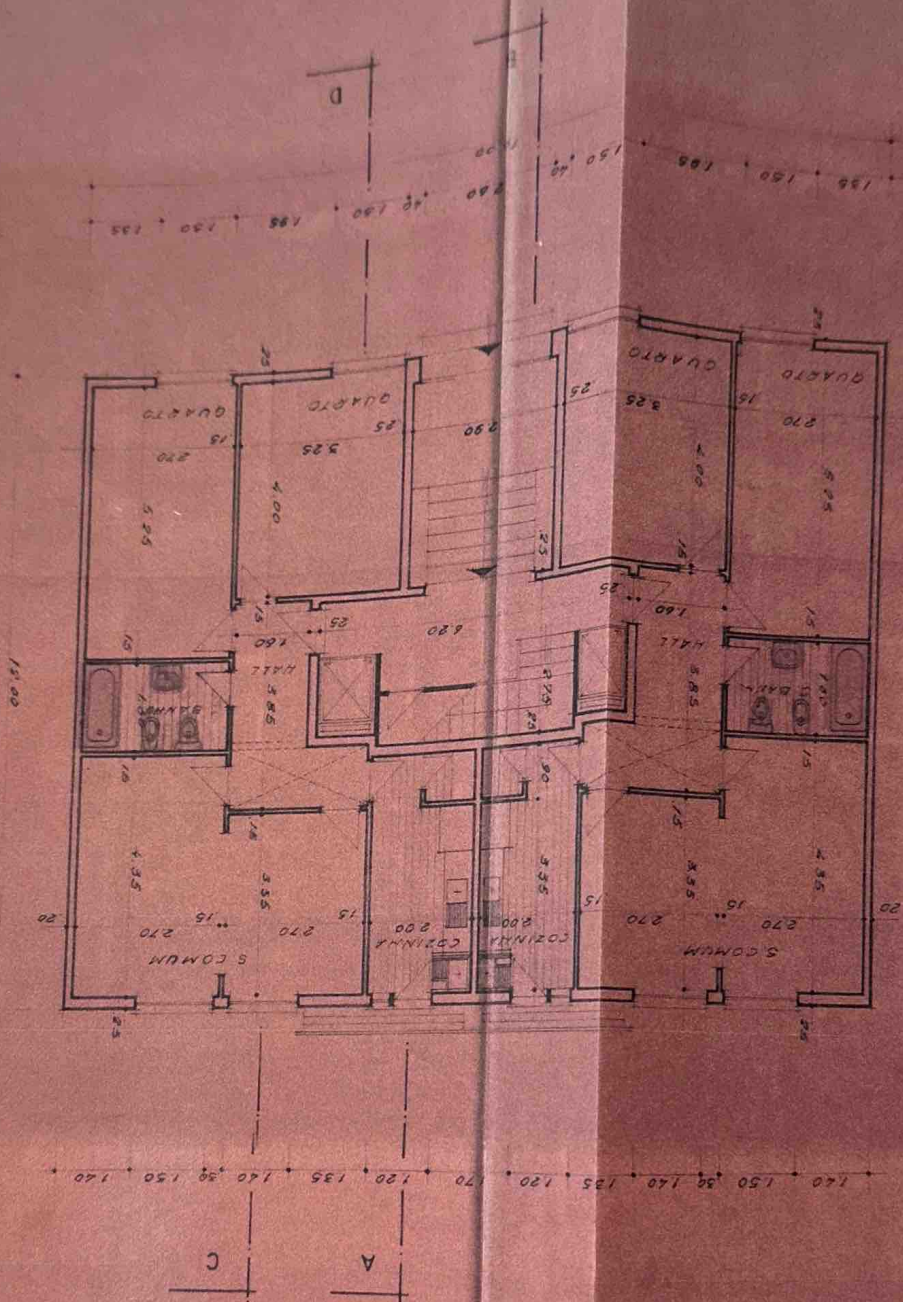


RES DO CHAU



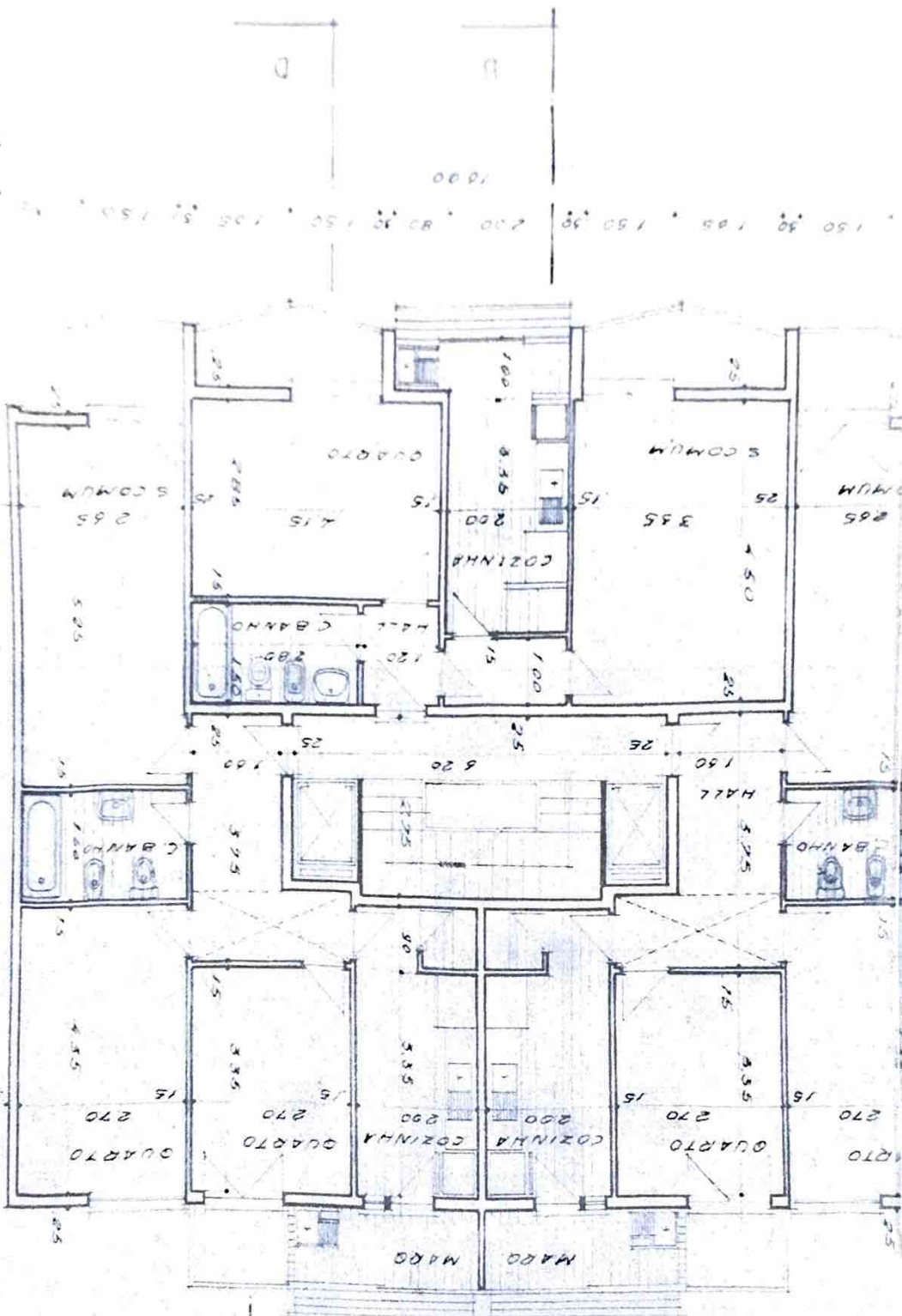
10 ANDAR

RES DO CHAU

10 ANDAR

10 ANDAR

10 ANDAR

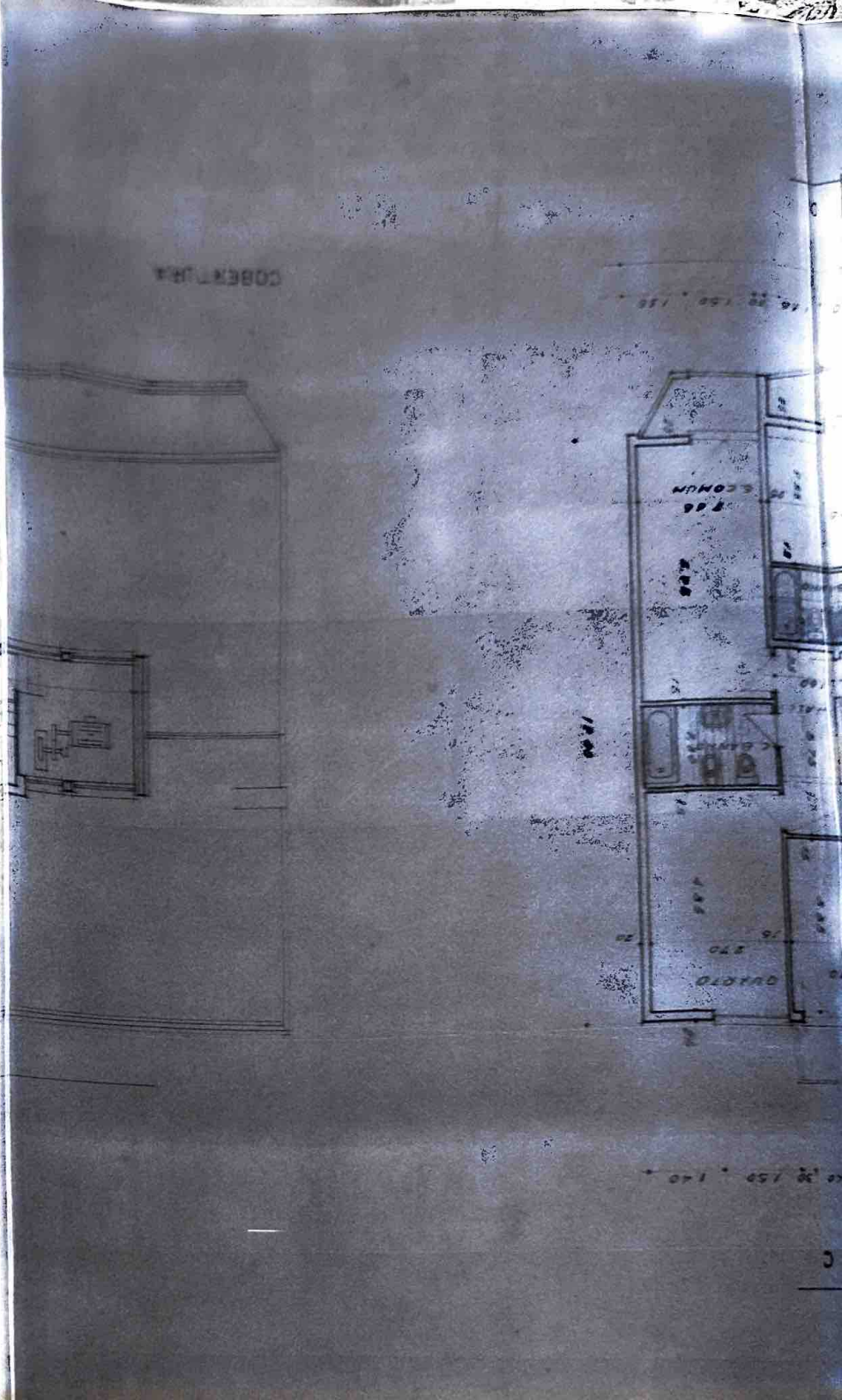
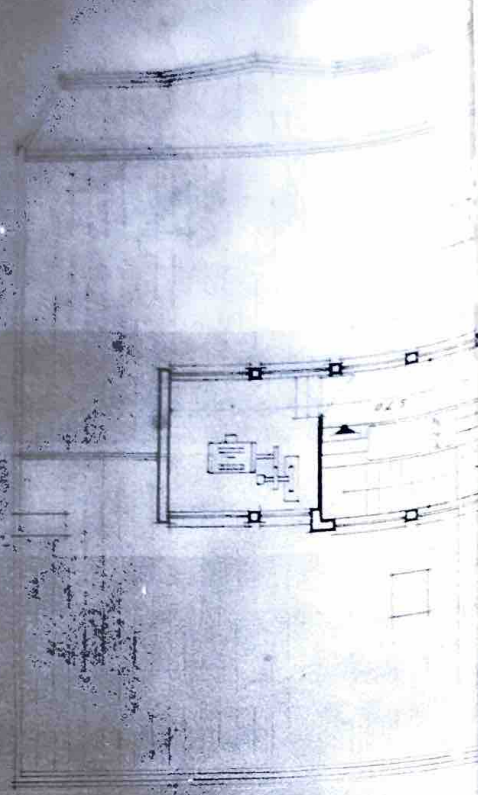


150 30 140 135 120 170 170 120 135 140 30 150 140

150 30 140 135 120 170 170 120 135 140 30 150 140

DATE OF WORK	1950
NAME OF WORKER	J. Smith
NO. OF WORKERS	1
DATE OF WORK	1950

Handwritten notes in the left margin, possibly including a date like '1950' and some illegible characters.



Handwritten initials or signatures at the bottom left of the left page.