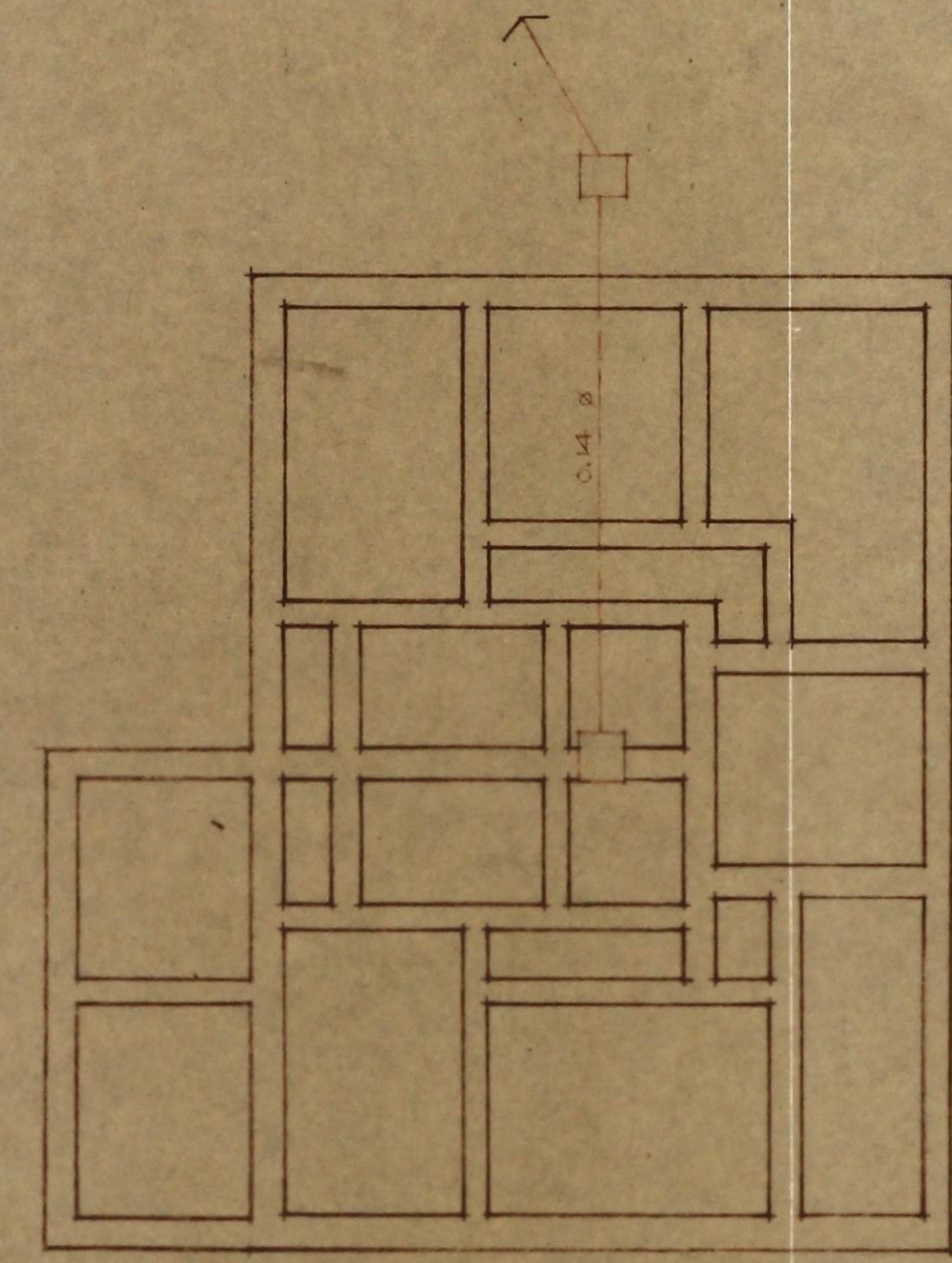


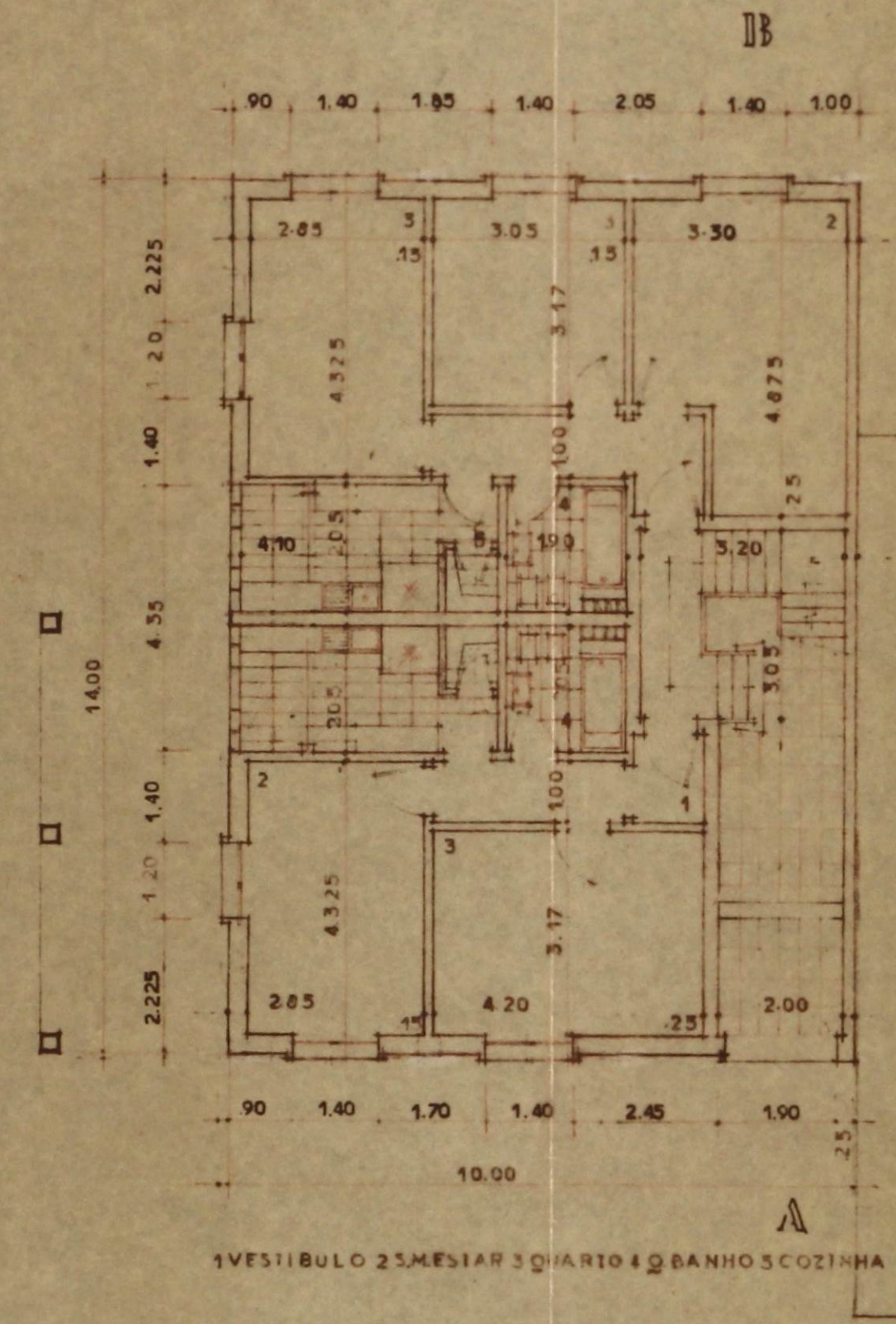
CÂMARA MUNICIPAL DE SINTRA  
SERVIÇO DE IMPLANTAÇÃO E OBRAS  
27.11.1961



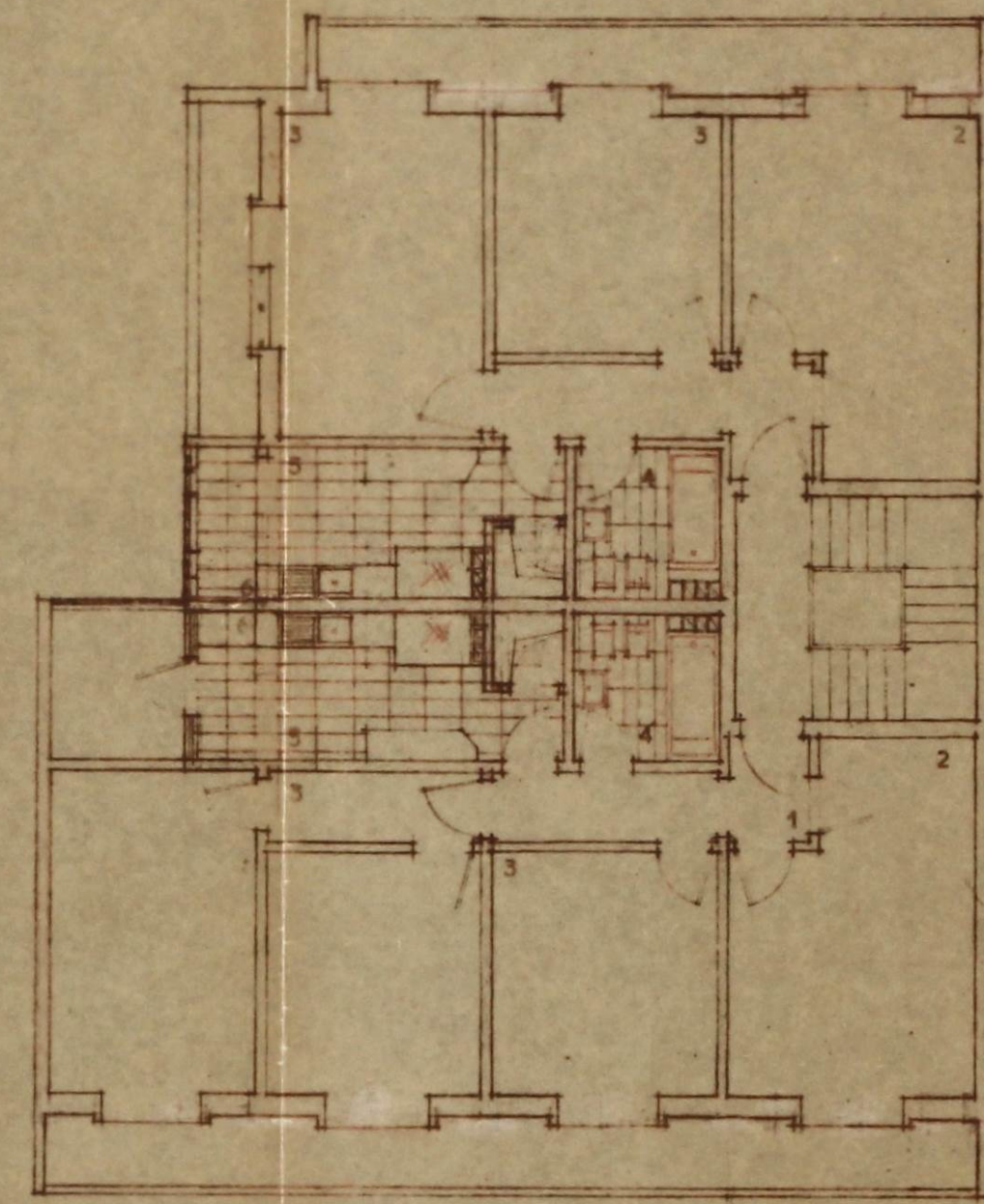
Vices *[Signature]*



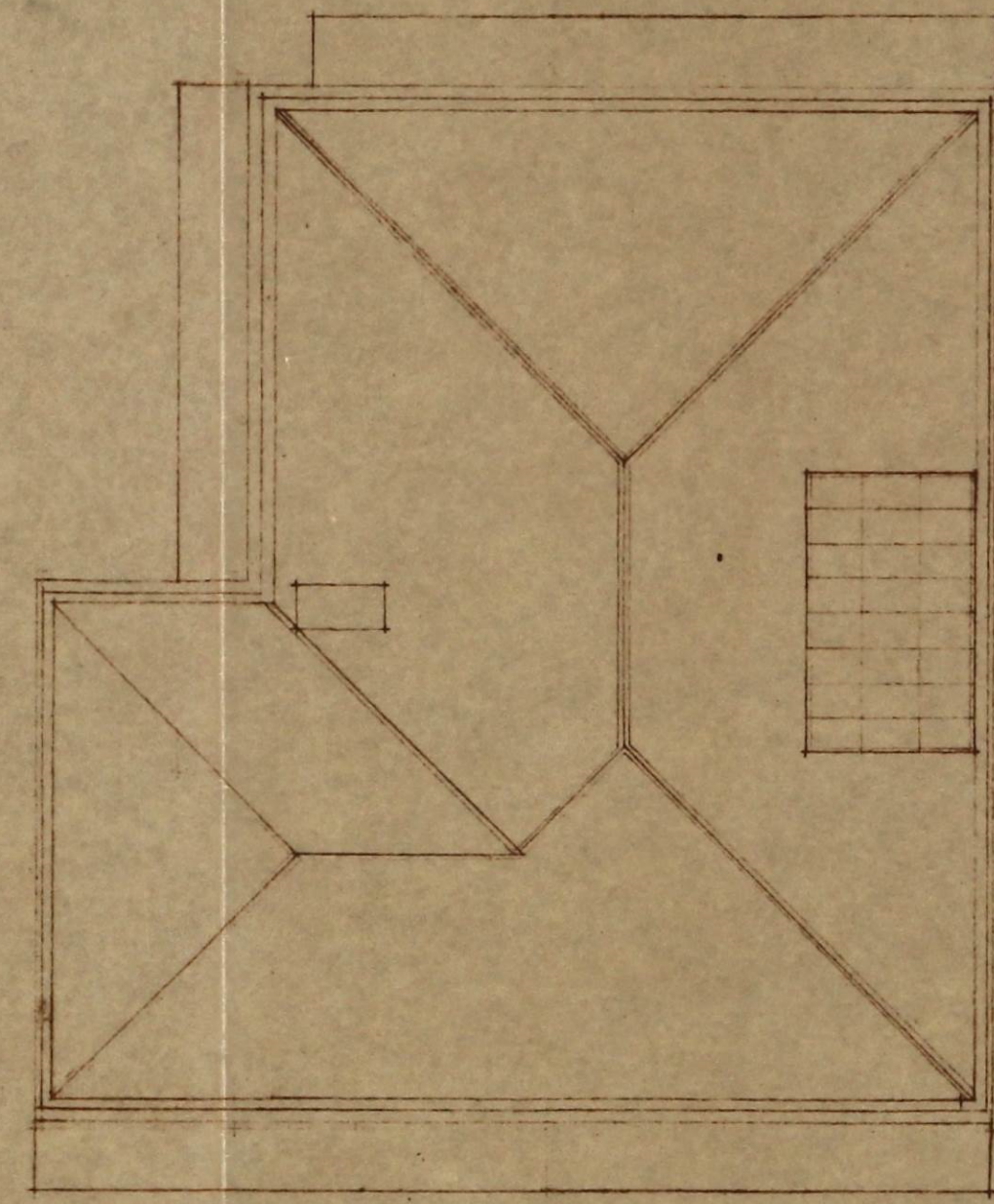
P. fundações



P. r/c



P. andares



P. cobertura

08  
03/5640/61  
GS

PROJECTO	
LOCAL: RUA DA PONTE - CACÉM	
ARQUITECTO:	<i>[Signature]</i> n.º 676
DATA:	ESCALA 1:100