

ANEXO 1



PLANTA DE LOCALIZAÇÃO

CÂMARA MUNICIPAL DE VILA FRANCA DE XIRA

DEPARTAMENTO DE PLANEAMENTO E GESTÃO URBANÍSTICA

Identificação

Nome do Requerente:

N.I.F.:

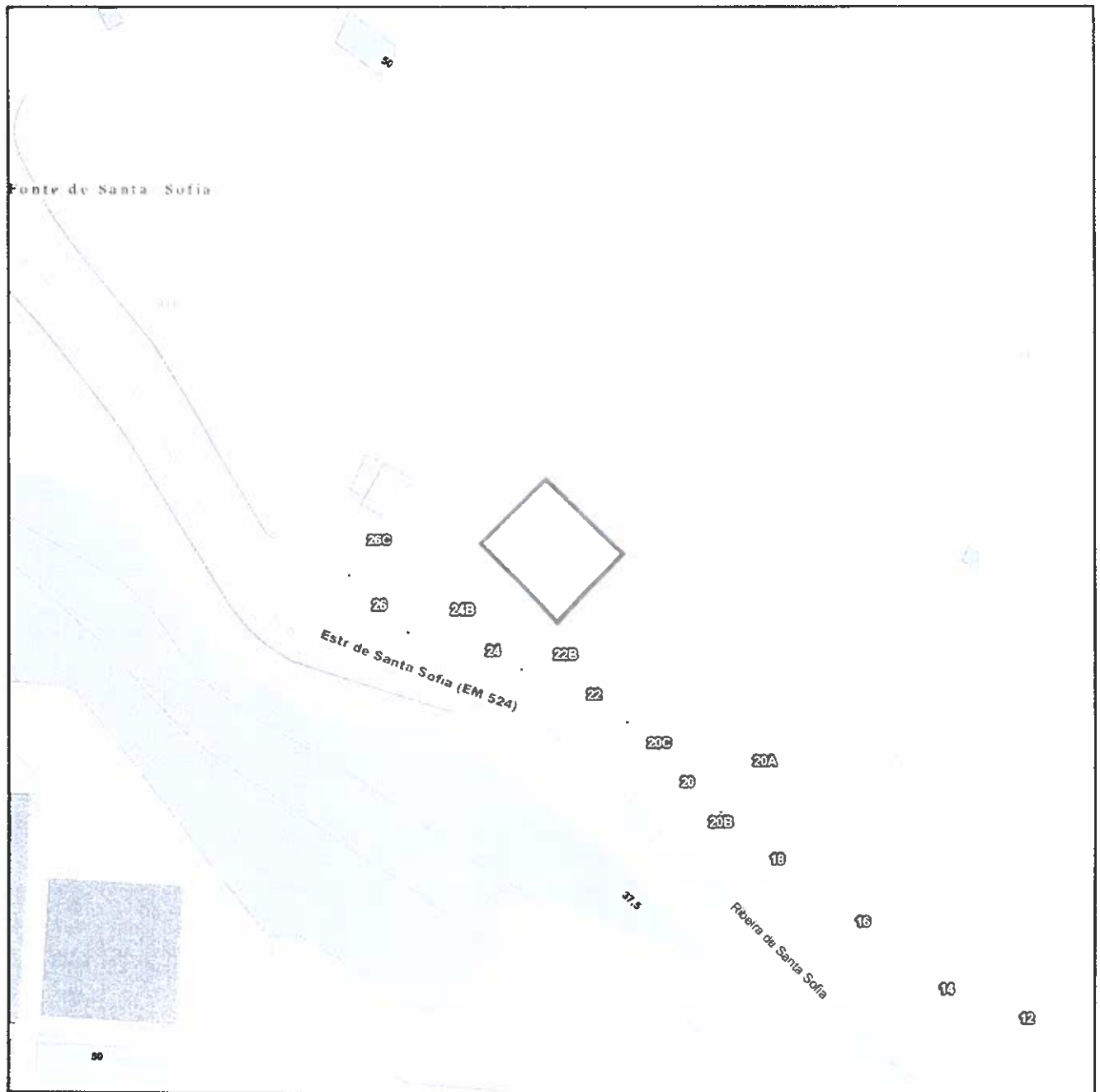
Freguesia: Vila Franca de Xira

N.º do Processo:

Local:

Data: 27-01-2022

Escala: 1:1 000



x: -75153 34
y: -78661 69

O Funcionário

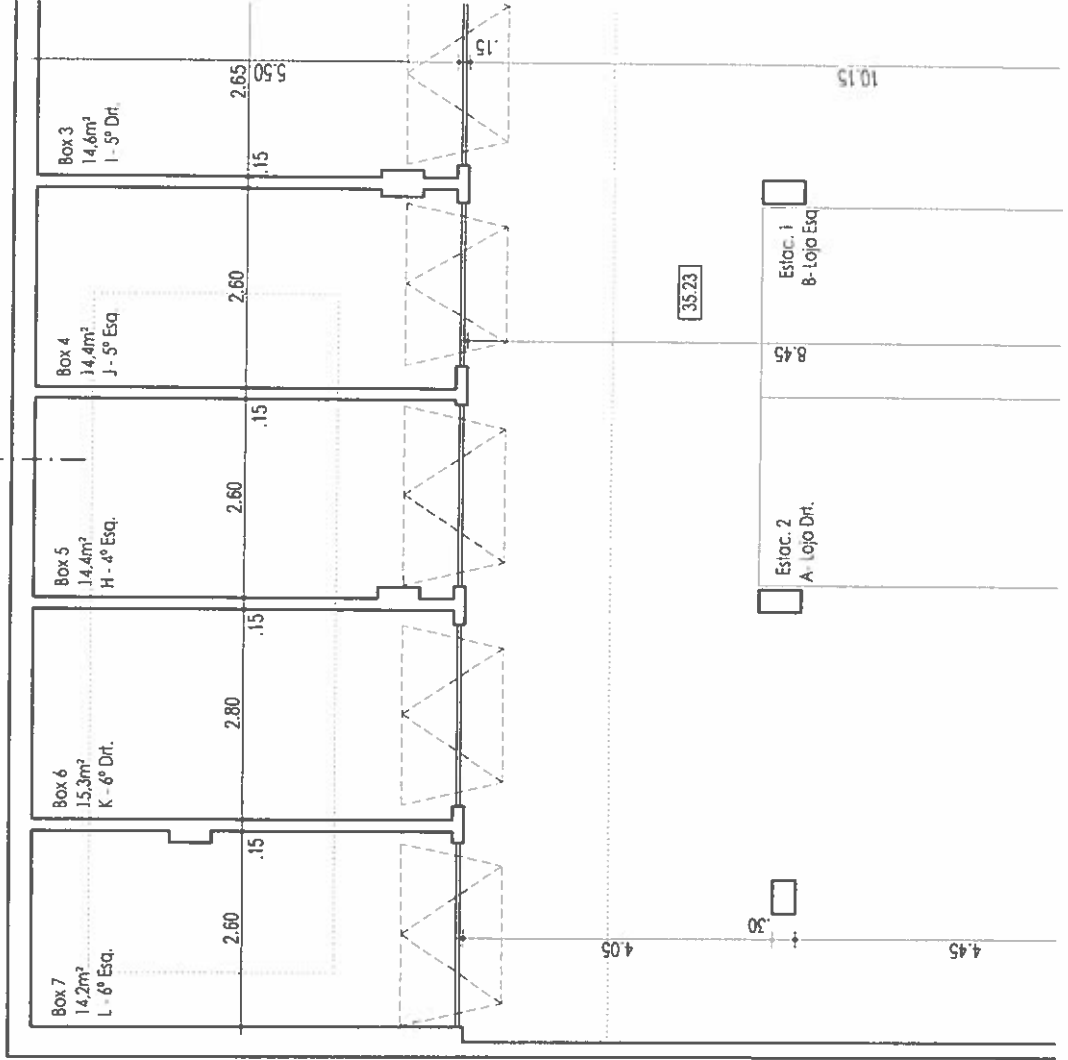
Obs.:

Projeção Hayford Gauss - Datum 73 - Elipsóide Internacional

Documento em formato PDF - Município de Vila Franca de Xira - Rua da República, 100 - 2700-150 Vila Franca de Xira

17.50

A



25.00

4.05

.30

4.45

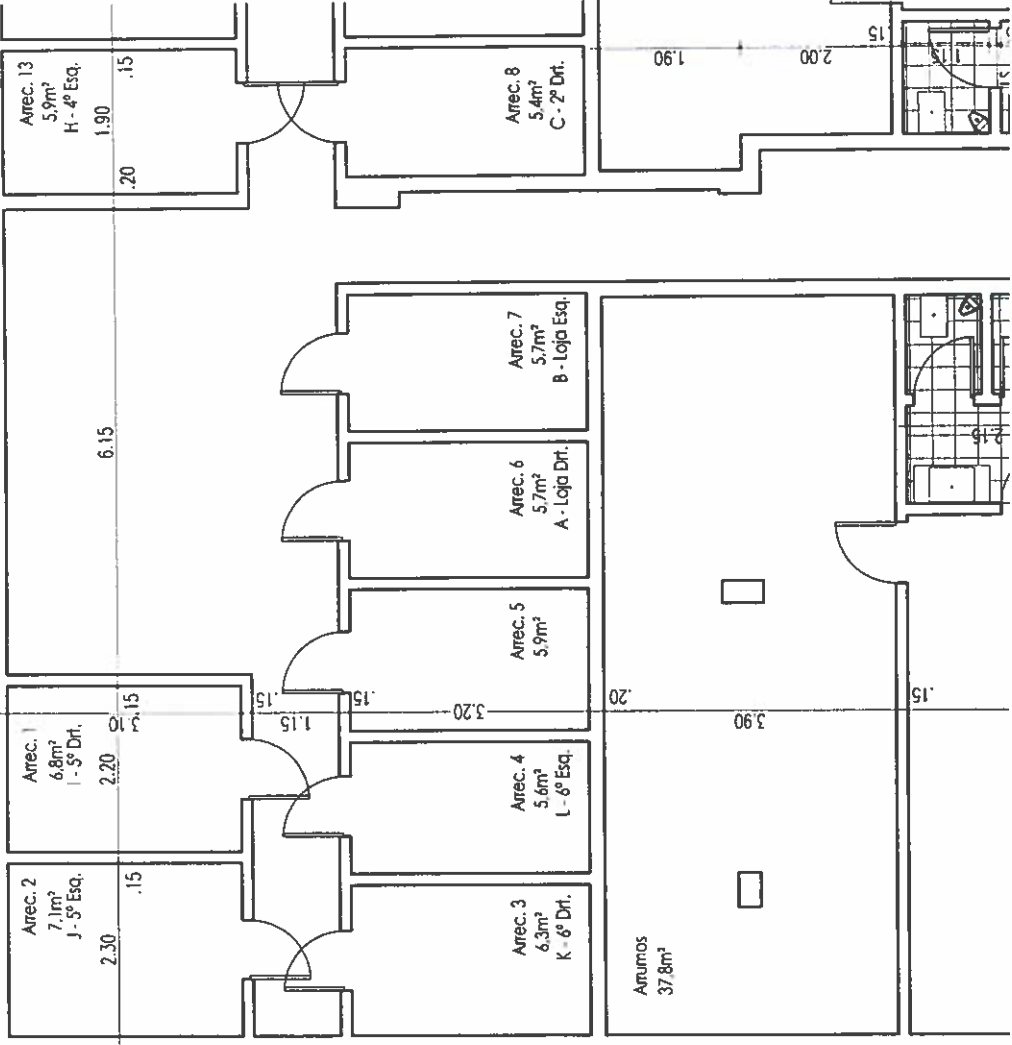
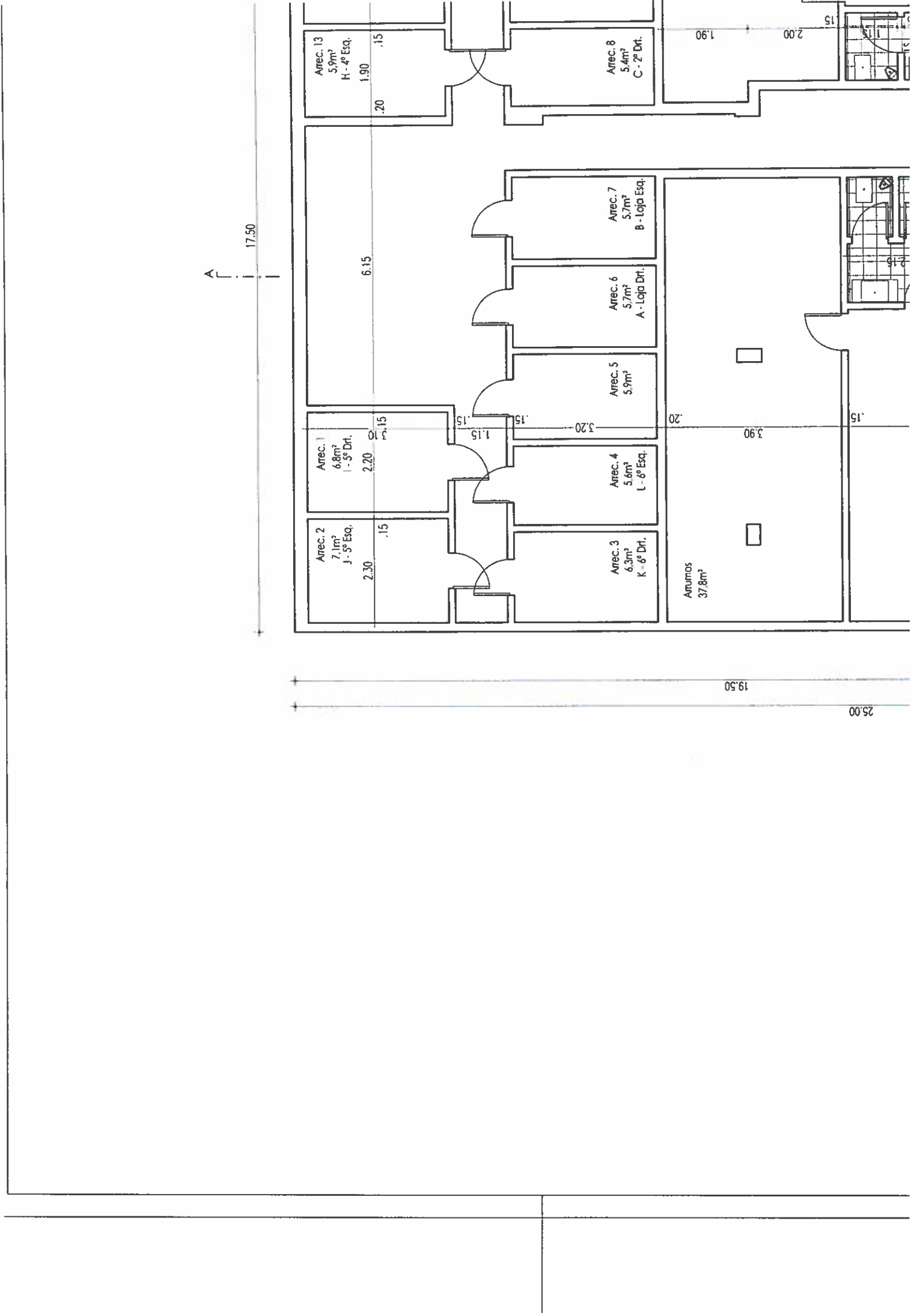
35.23

Estoc. 1
B-10º Esq.

8.45

Estoc. 2
A-10º Dnt.

10.15



Arec. 13
 5.9m²
 H - 4º Esq.
 1.90
 .20
 .15

Arec. 2
 7.1m²
 J - 5º Esq.
 2.30
 .15

Arec. 1
 6.8m²
 I - 5º Dri.
 2.20
 3.10
 .15

Arec. 3
 6.3m²
 K - 8º Dri.
 1.15
 .15

Arec. 4
 5.6m²
 L - 8º Esq.
 3.20
 .15

Arec. 5
 5.9m²
 3.20
 .15

Arec. 6
 5.7m²
 A - Loja Dri.
 .15

Arec. 7
 5.7m²
 B - Loja Esq.
 .15

Arec. 8
 5.4m²
 C - 2º Dri.
 1.90

Anuncios
 37.8m²
 3.90
 .20

6.15
 17.50

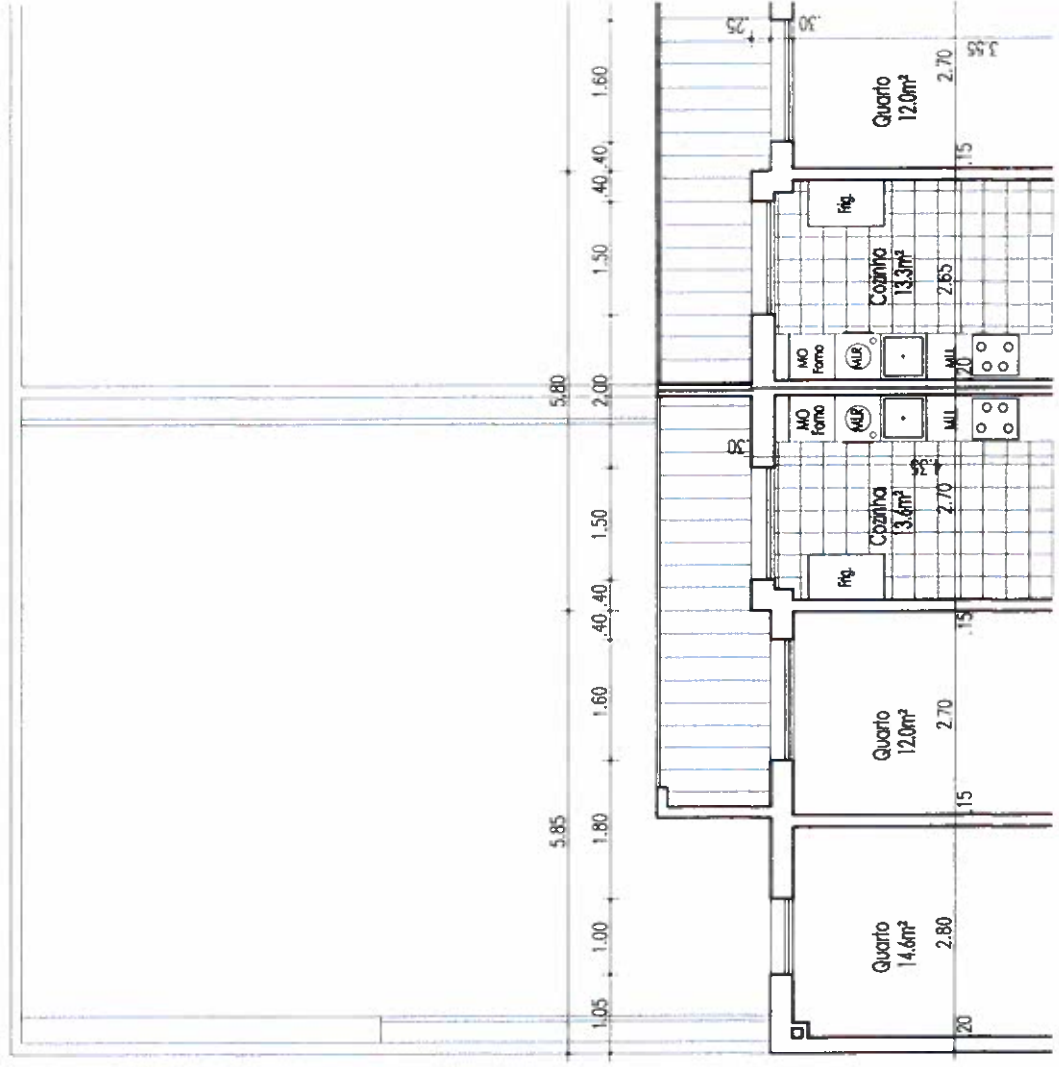
19.50
 25.00

1.15
 2.15

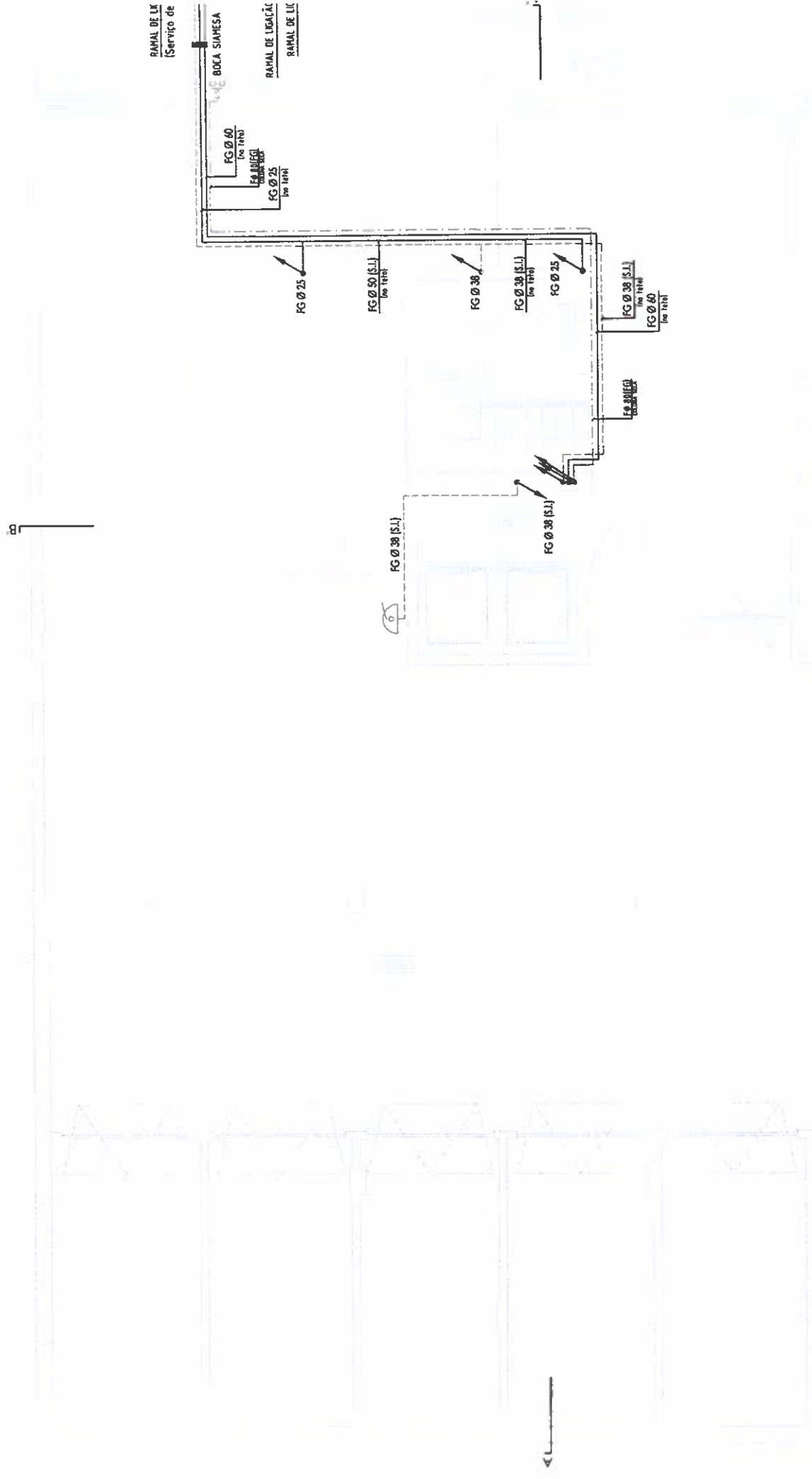
1.15
 2.15

1.15
 2.15

A



ANEXO 2



RAMAL DE LU
(Serviço de

BOCA SIAMESA

RAMAL DE LIGALÁ

RAMAL DE LU

FG Ø 60
(de 14H)

Fe. 011150

FG Ø 25
(de 14H)

FG Ø 25

FG Ø 38 (S.L.)
(de 14H)

FG Ø 38

FG Ø 38 (S.L.)
(de 14H)

FG Ø 25

FG Ø 38 (S.L.)
(de 14H)

FG Ø 60
(de 14H)

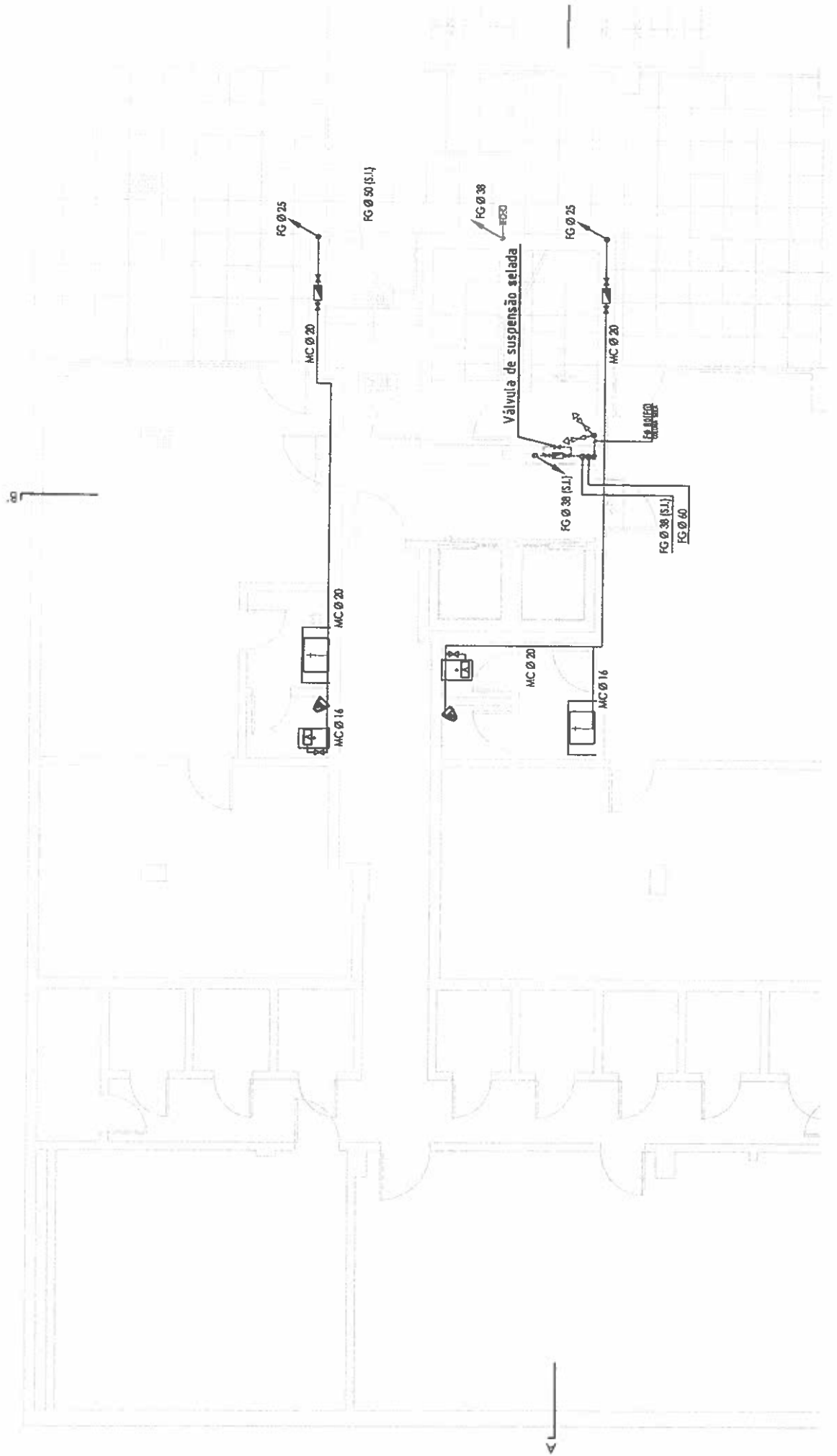
Fe. 011150

FG Ø 38 (S.L.)

FG Ø 38 (S.L.)

a





FG Ø 25

FG Ø 50 (S.L.)

FG Ø 38
Ø 250

FG Ø 25

Válvula de suspensão selada

FG Ø 38 (S.L.)

FG Ø 38 (S.L.)
FG Ø 40

MC Ø 20

MC Ø 20

MC Ø 16

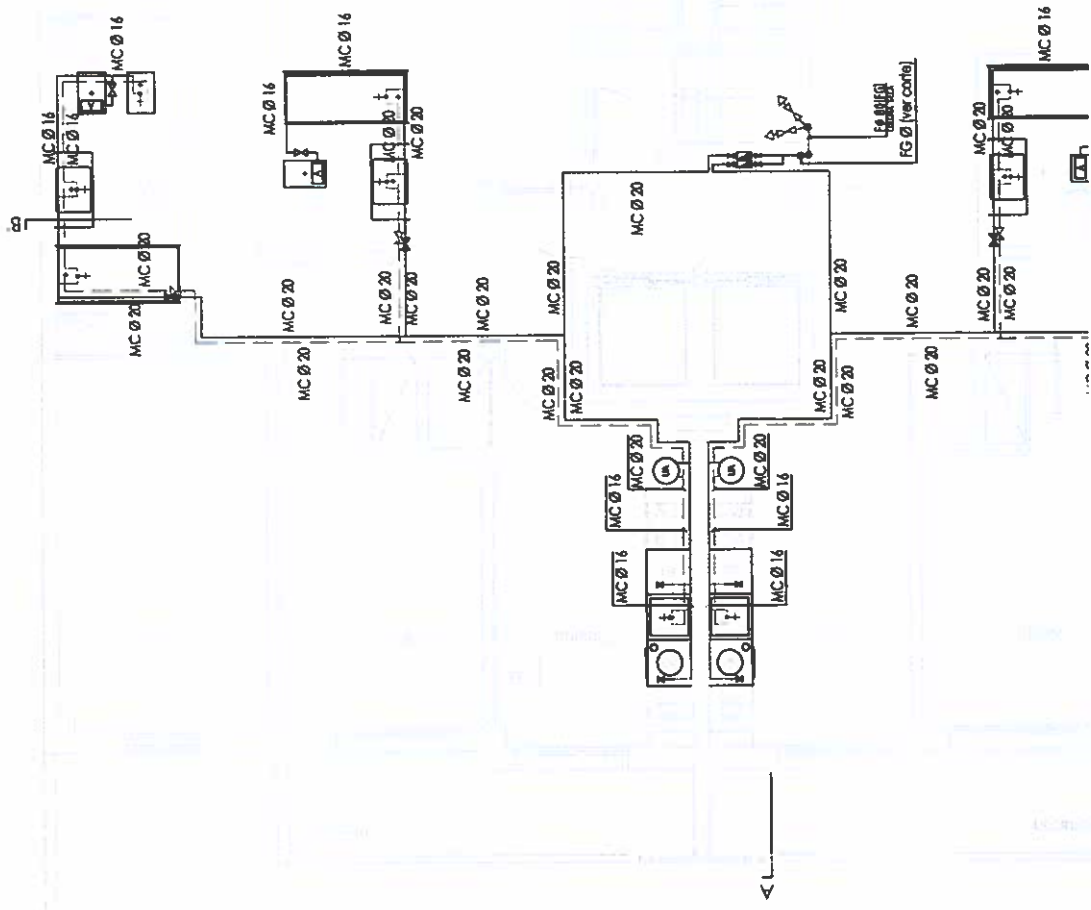
MC Ø 20

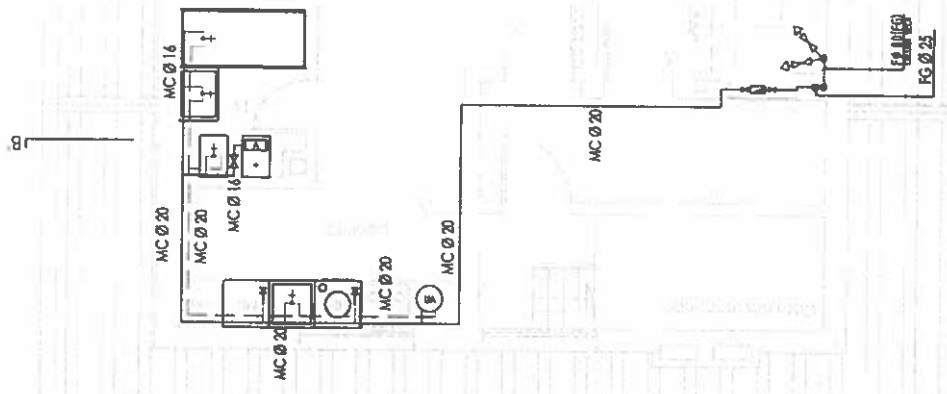
MC Ø 16

Válvula de 1/2"

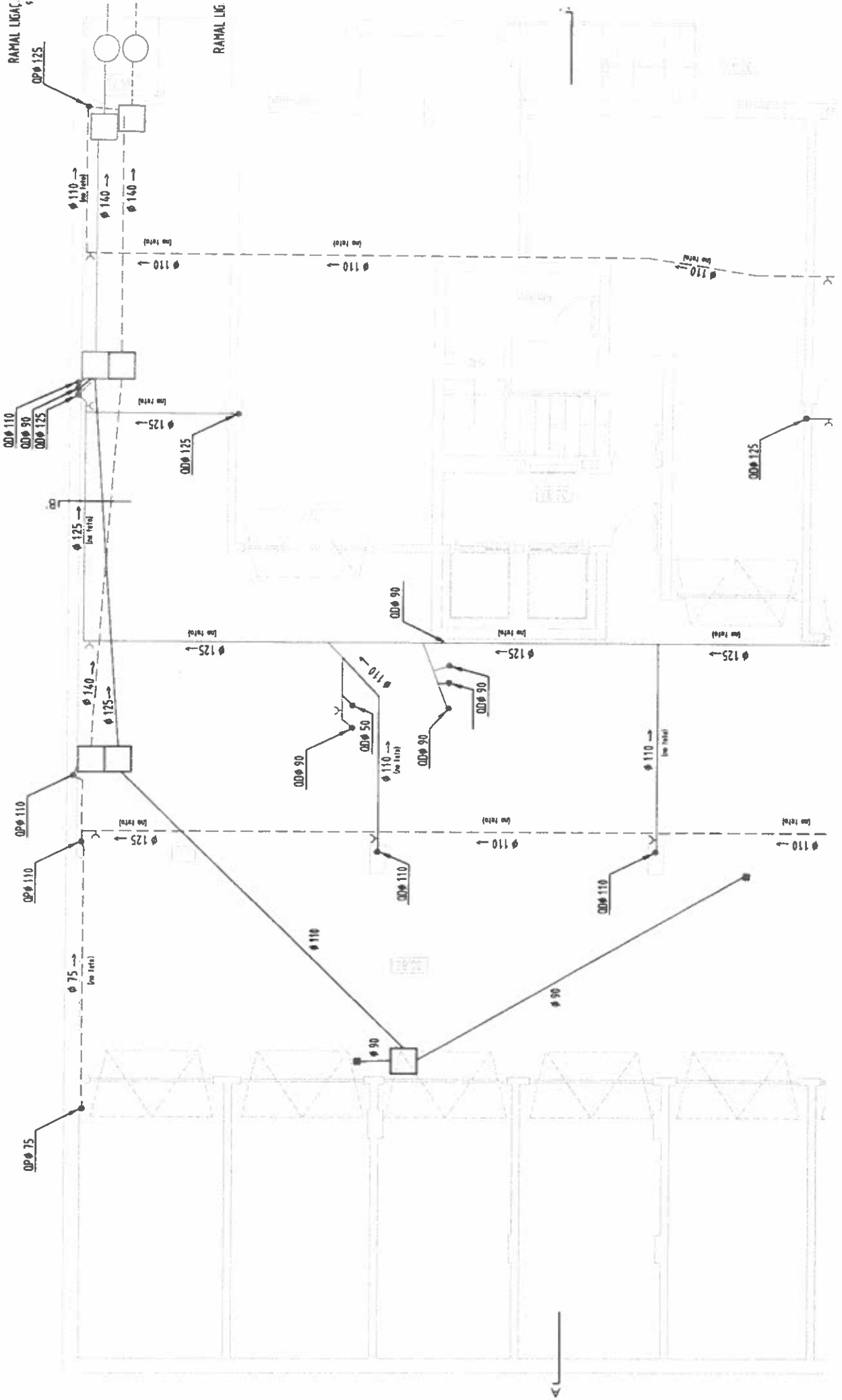
Válvula de 3/4"







ANEXO 3



ØP Ø 110

ØD Ø 110
ØD Ø 90

ØP Ø 110

ØD Ø 110
ØD Ø 90

ØD Ø 125
Ø 125
(for 400)

ØD Ø 110

ØD Ø 90
ØD Ø 50
ØD Ø 90
ØD Ø 50
ØD Ø 90

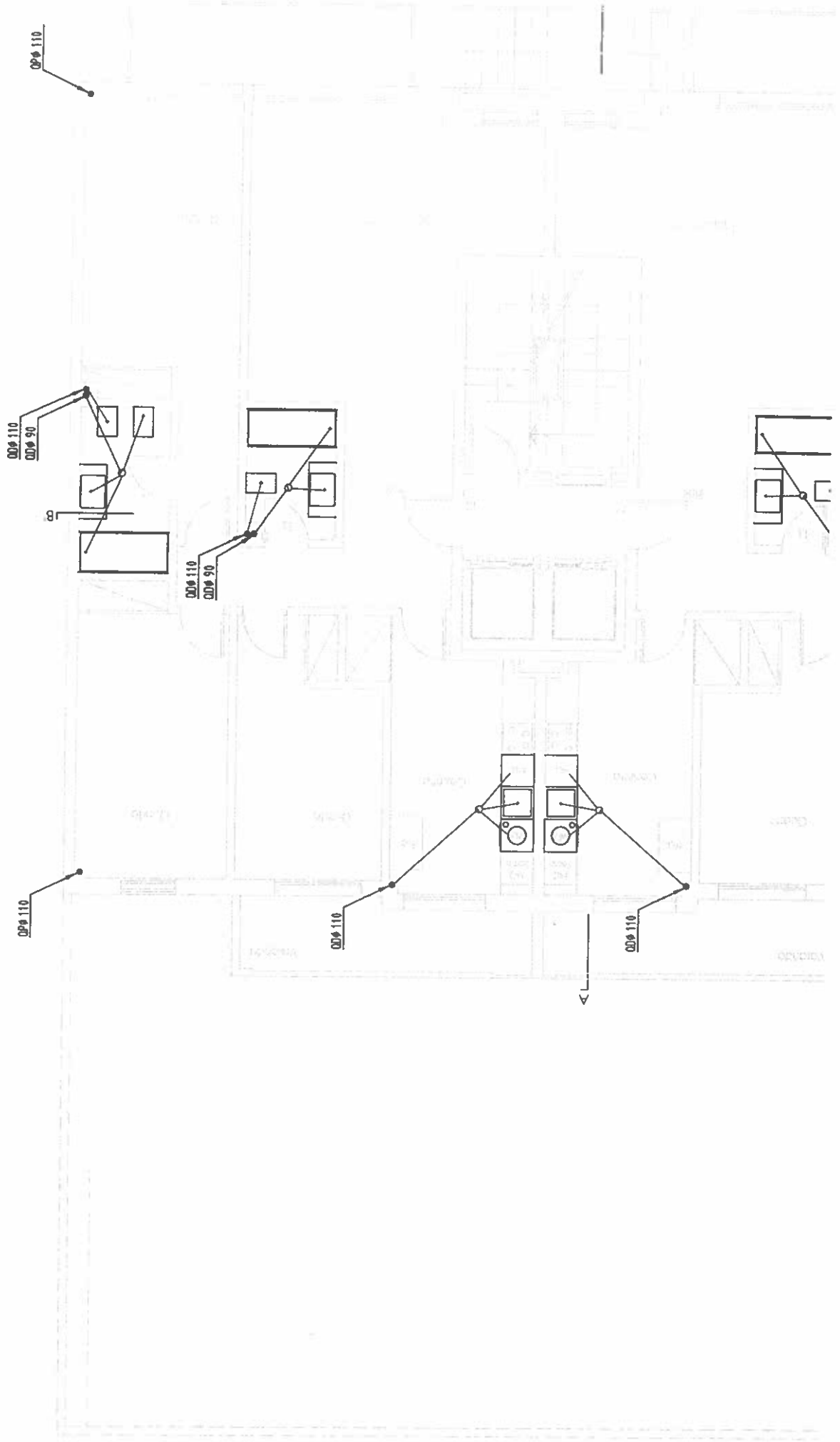
ØD Ø 110

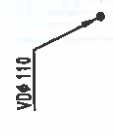
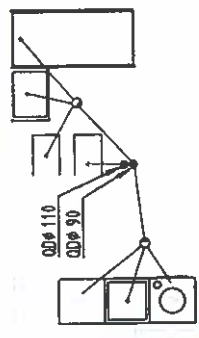
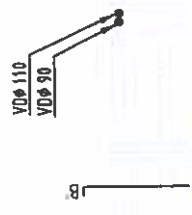
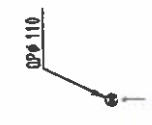
ØP Ø 75

ØP Ø 110

ØD Ø 125

←





OP# 110

VD# 110
VD# 90

.8

VD# 110
VD# 90

OP# 110

VD# 110

VD# 110

