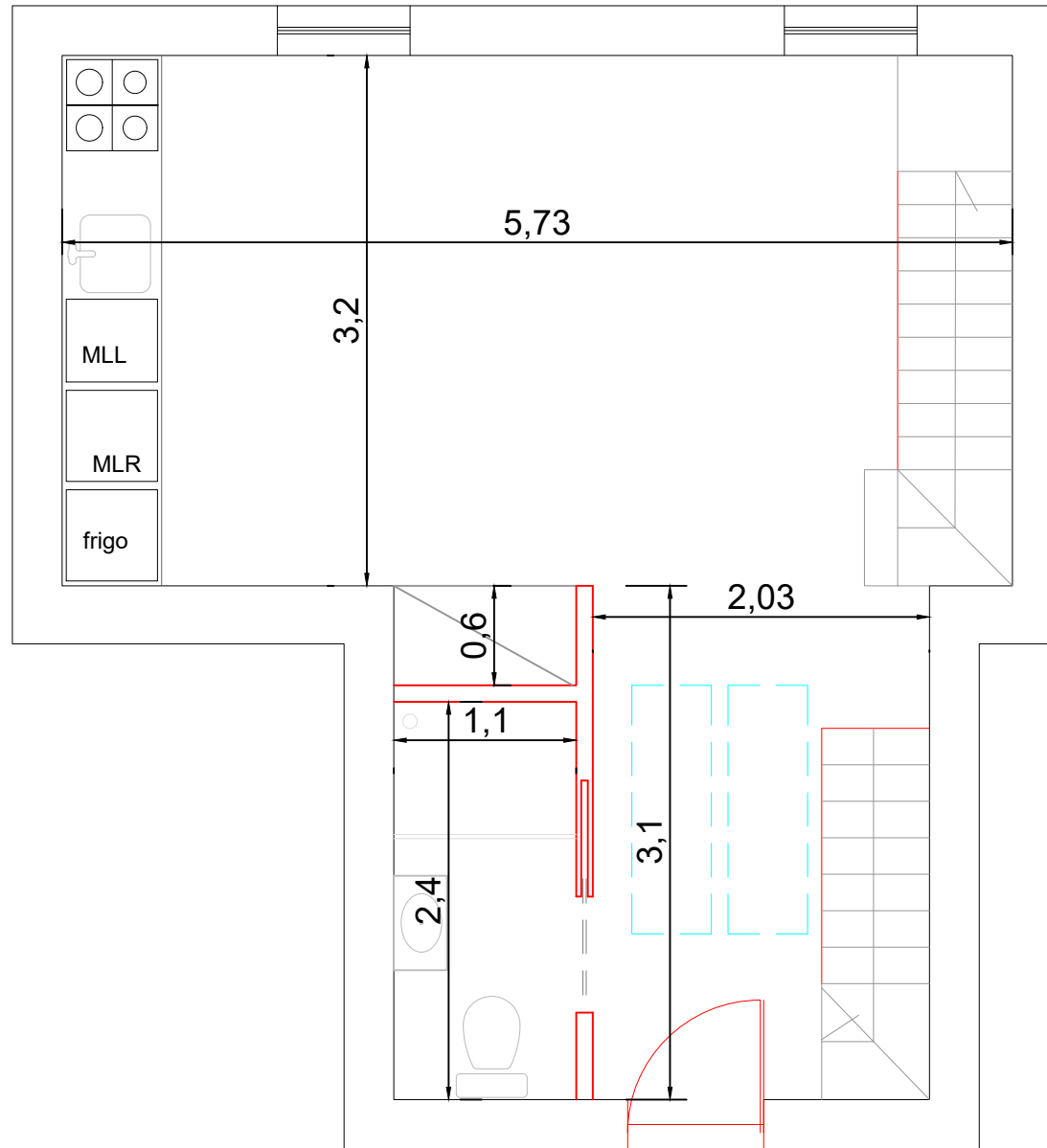
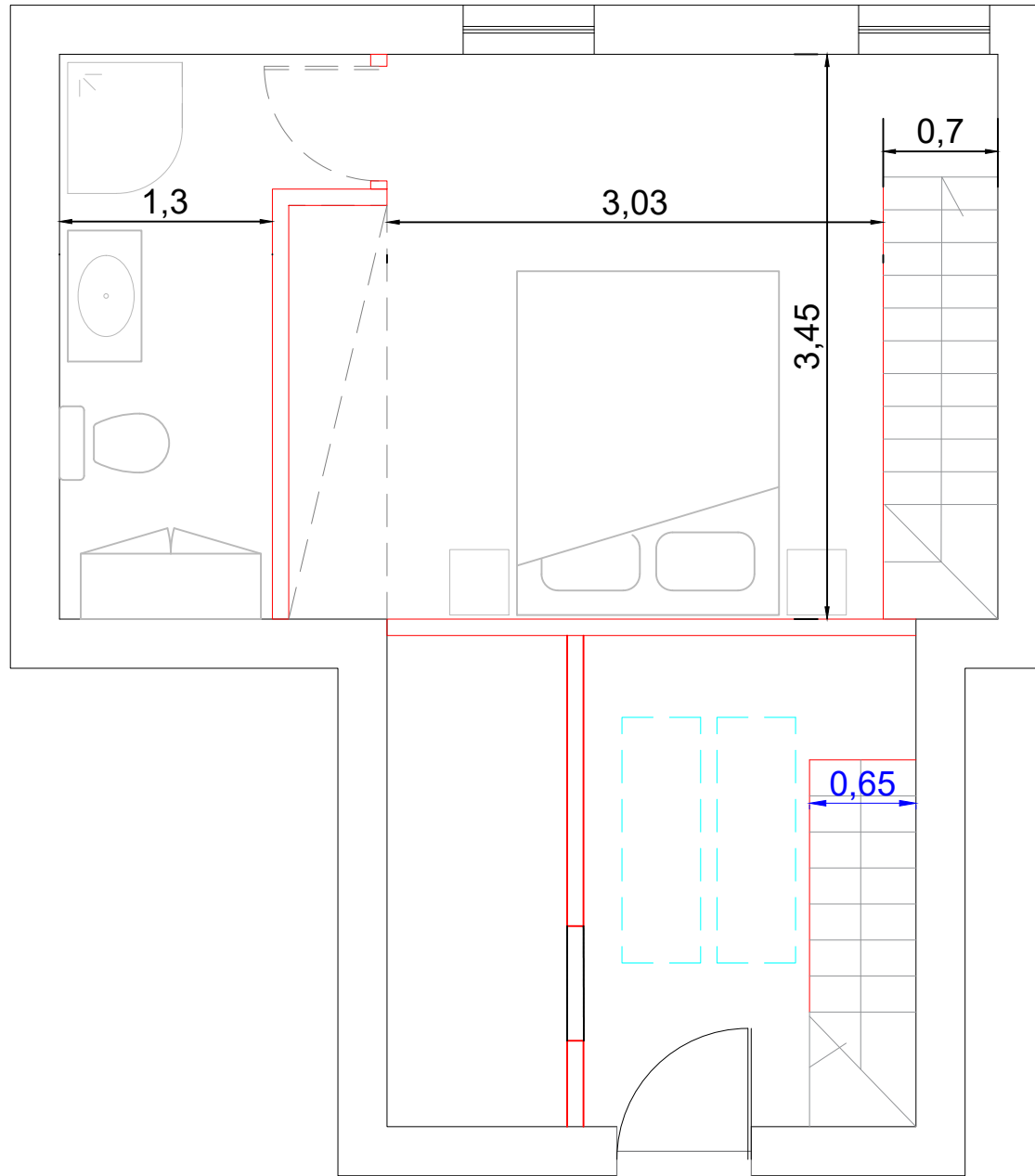


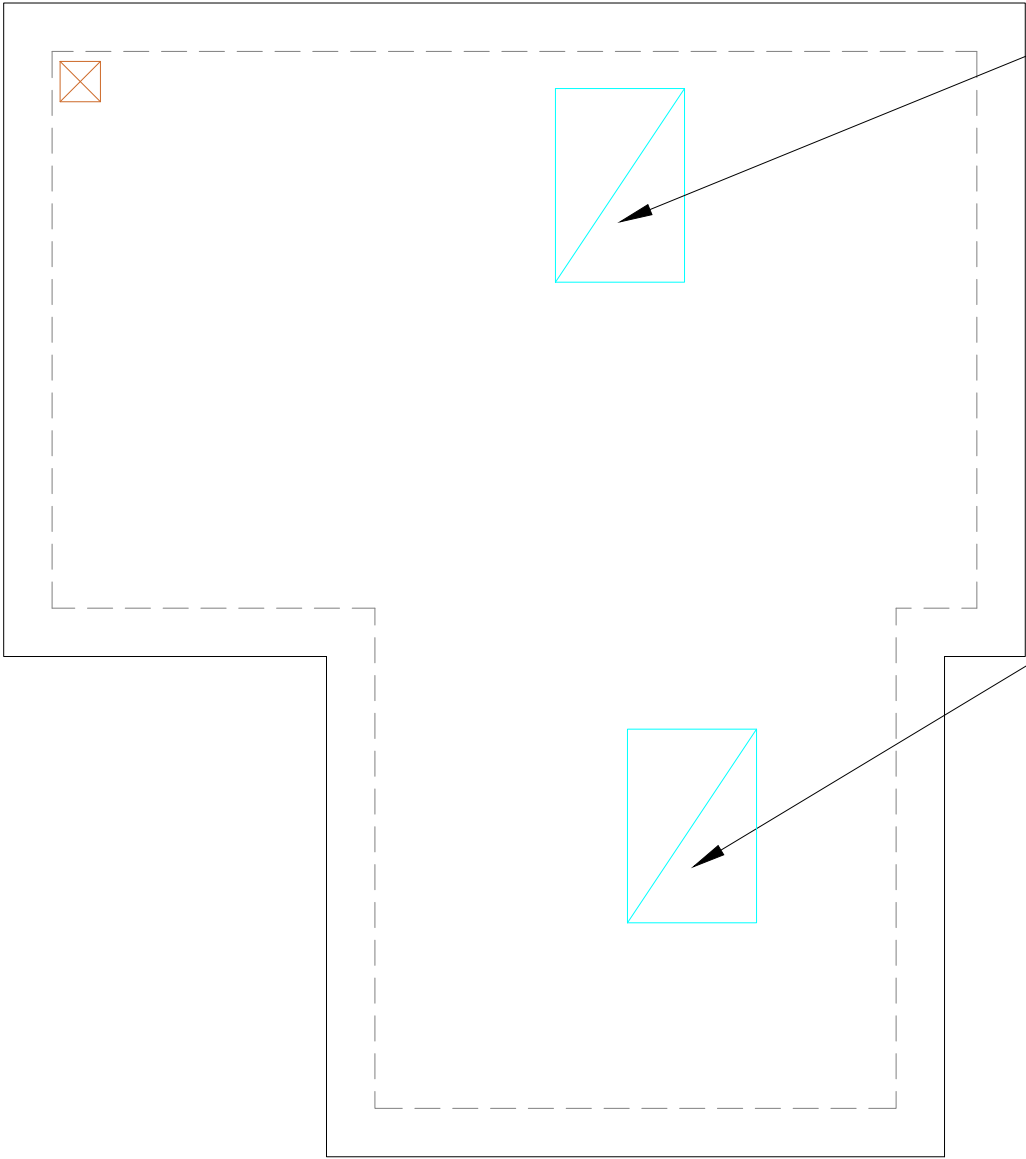
Piso -1: Cave



Piso 0: Rés do Chão



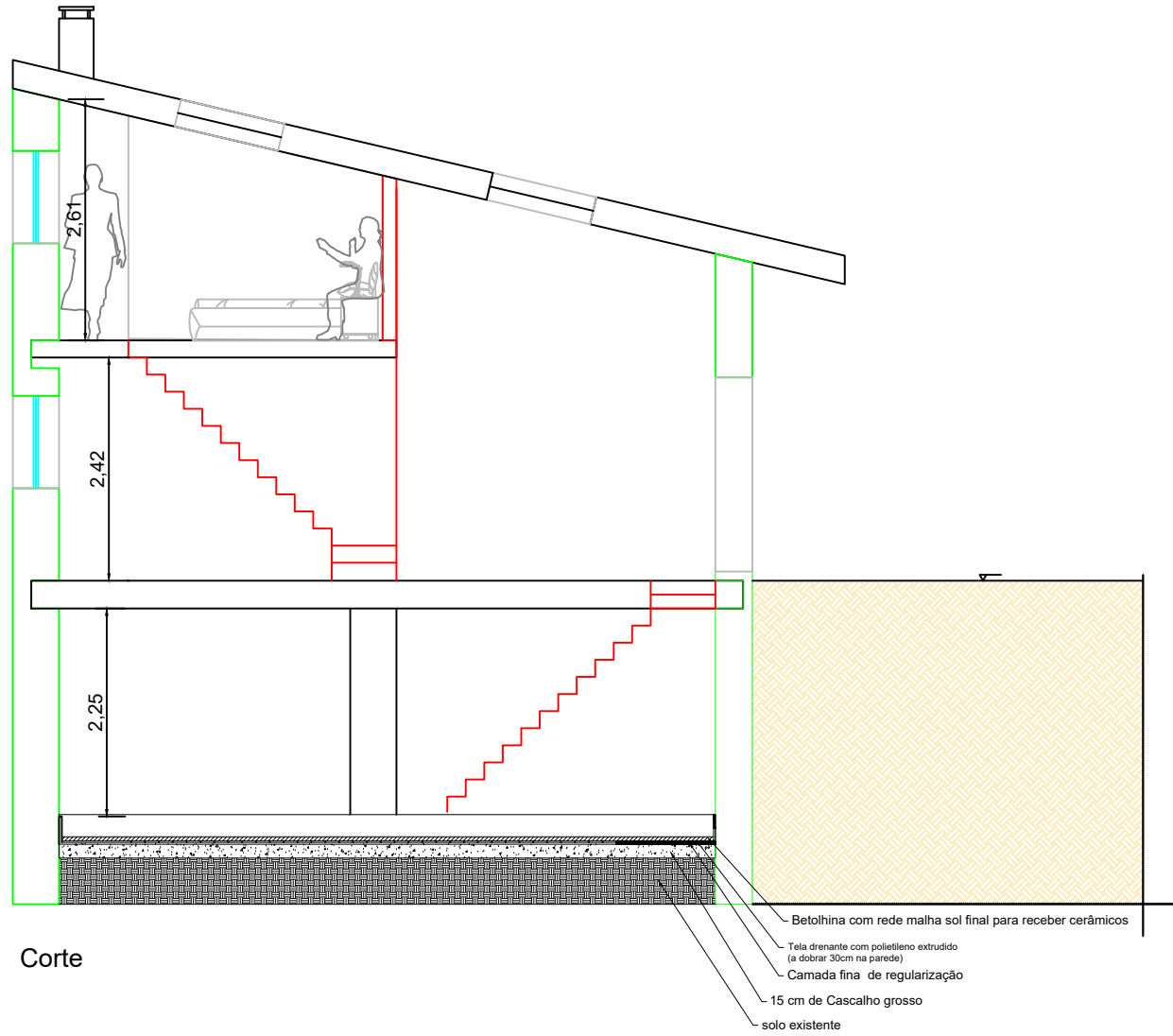
Piso 1: 1° Andar



Janela sótão basculante
(tipo velux)
Dimensão ~ 0.8x1.14 [m]
[Quarto]

Janela sótão fixa (tipo velux)
Dimensão ~ 0.8x1.14 [m]
[Sala e R/C]

Cobertura



Corte