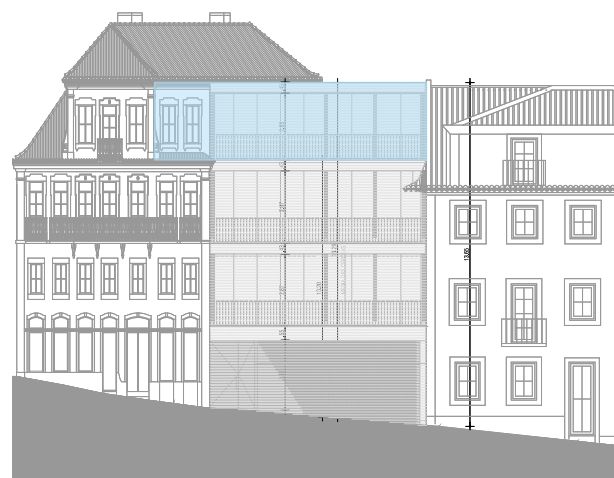
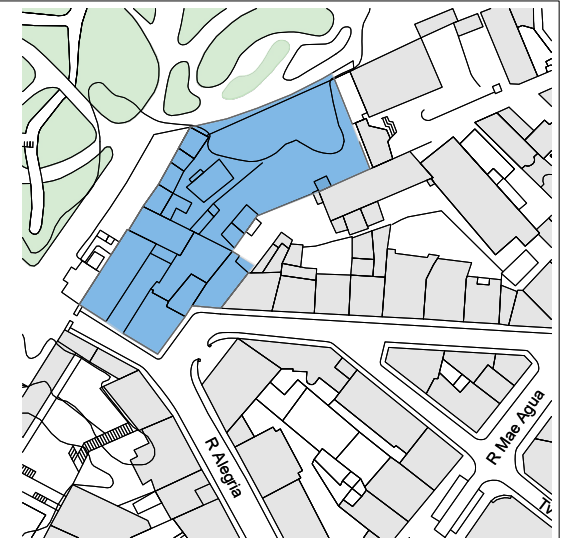
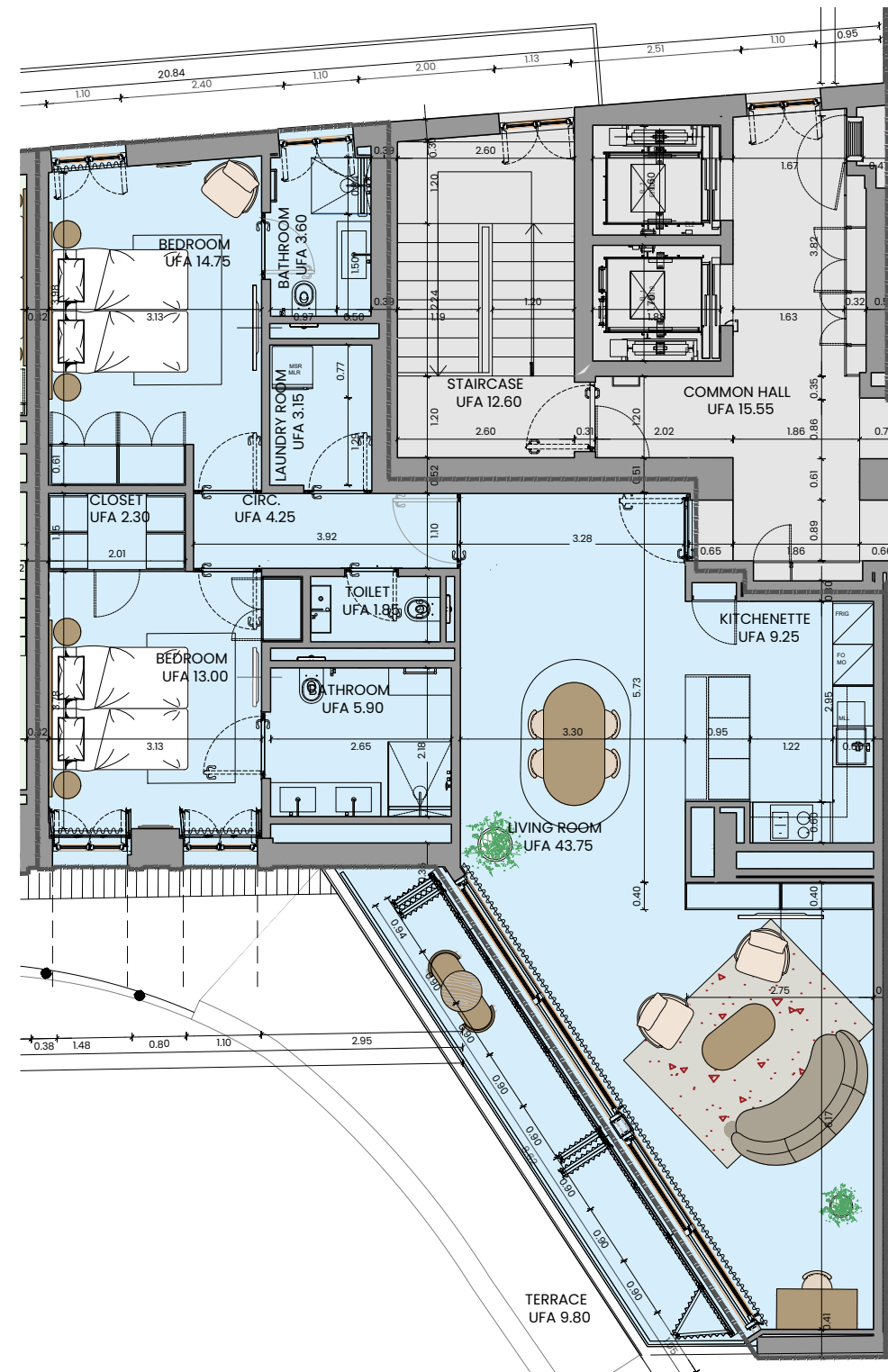


EastBanc

Rua da Alegria 76 a 86

APARTMENT 22/733 - T2 (THIRD FLOOR)

UNIT/FLOOR(S)				G.C.A.	EXTERIOR AREAS		G.L.A.
INTERNAL	CODE	TYPE	FLOOR		50%	25%	
AP. 22	733	T2	3	123,45			123,5



*Gross Leasable Area (GLA): corresponds to the total area of the Floor space, measured by the exterior of the walls and axes of the interior separating walls. Includes Floor space of hall, toilets, kitchenette, storages, balconies and terraces (25%/50%), as well as exclusive use common areas, and excludes common stairs and lifts, and vertical technical circulations.

Usable Floor Area (UFA) is the space within a building suitable for occupation, where people live or work, measured from the internal face of walls.

Floor plans are architect's renderings and all dimensions are approximate and subject to normal construction variances and tolerances. EastBanc reserves the right to make changes.



PARTIAL FLOOR OCCUPANCY LIMIT

