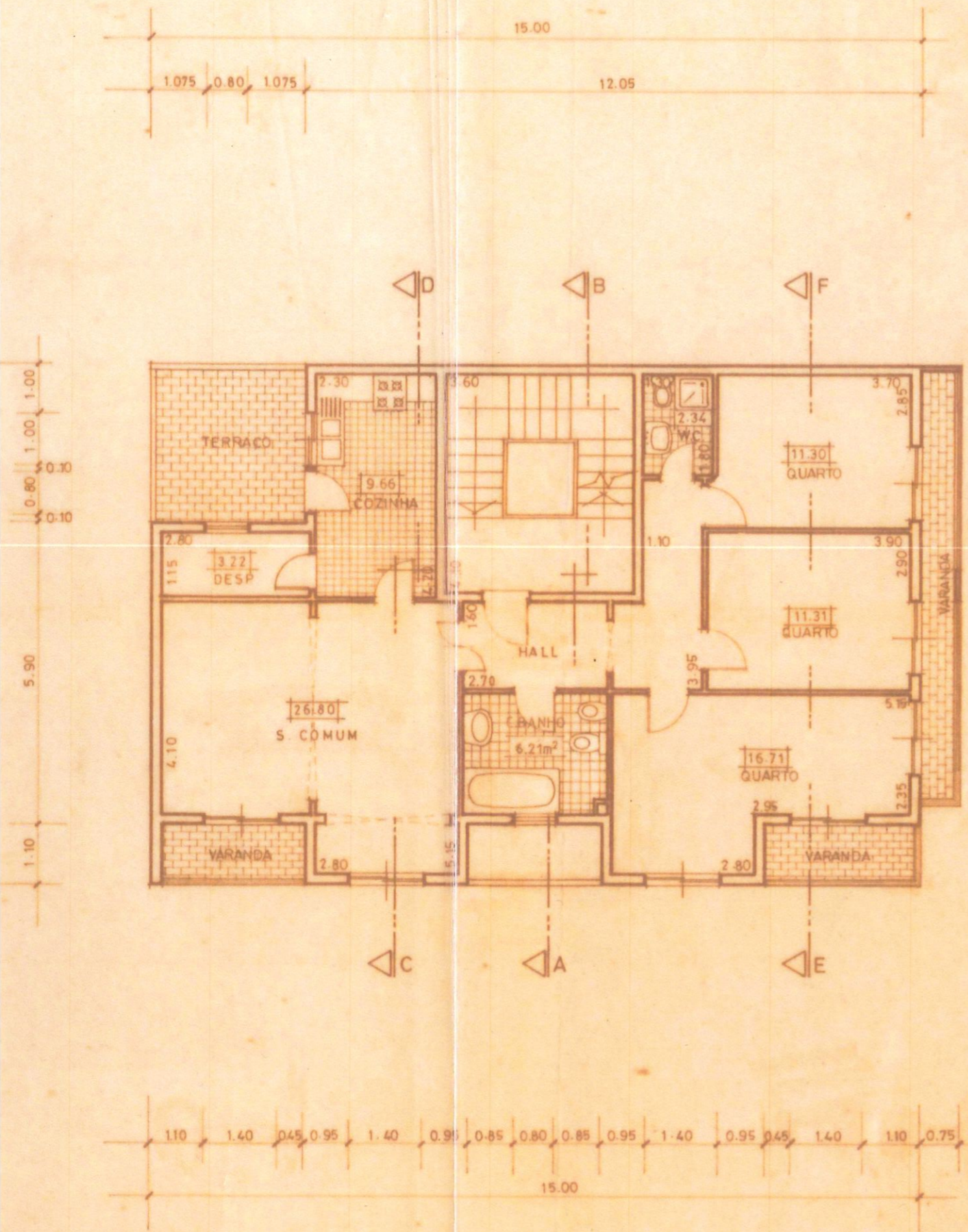
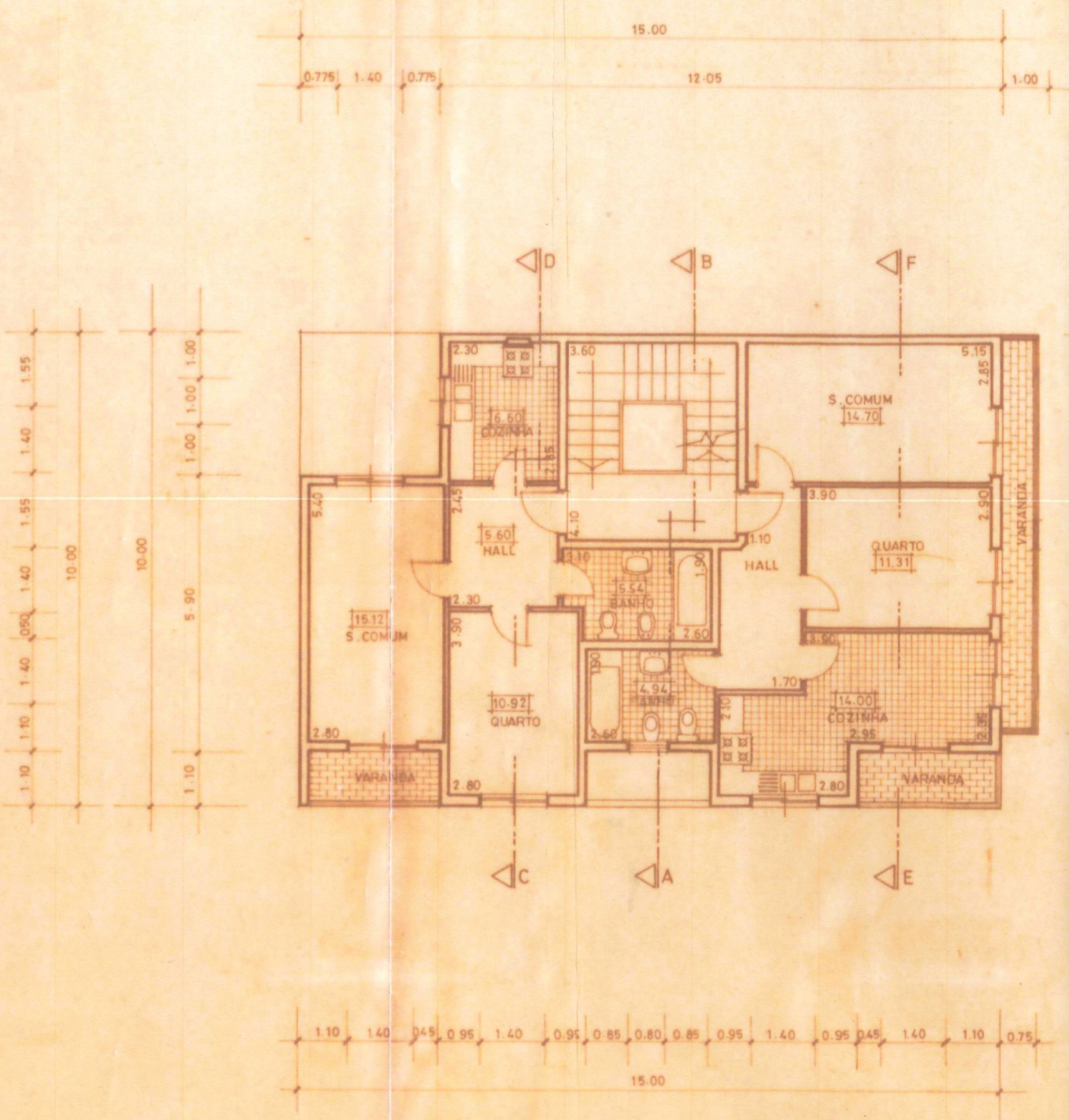


1º PISO

2º PISO



2º PISO

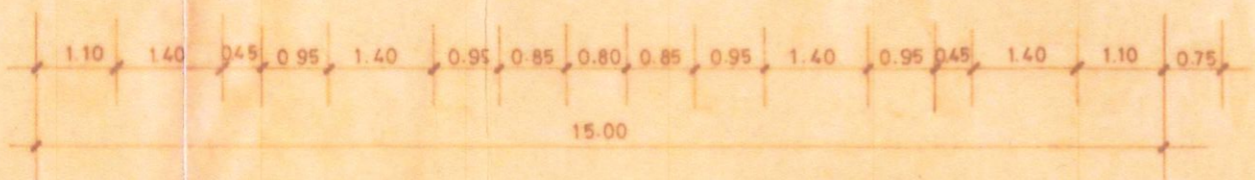
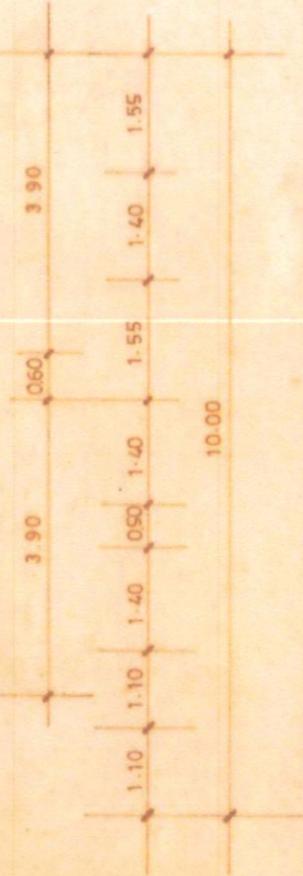
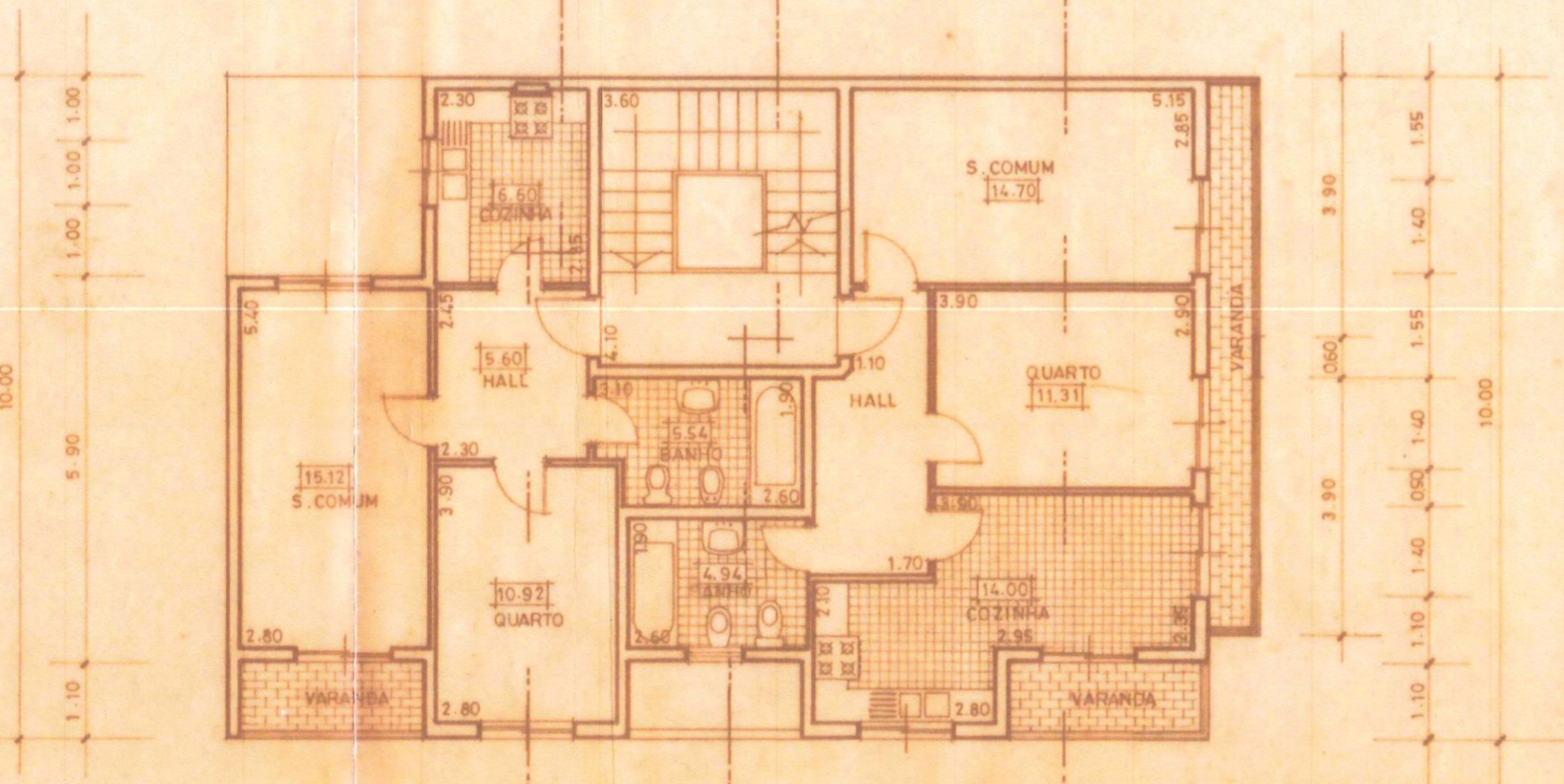
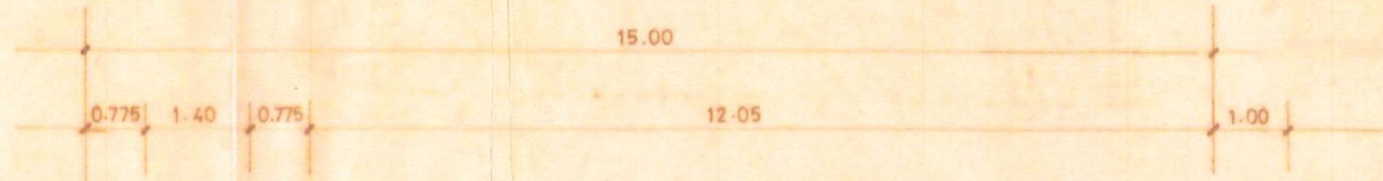


3º PISO



1303/80
170

Visto
Braz



3º PISO

estudo:	BLOCO COMERCIAL E RESIDÊNCIAL	
contém:	P L A N T A S	
escala	1/100	data OUT 86
ref.nº	1 428-01	folha 2
local	RUA DAS REDES e RUA DO ALENTEJO ARMAÇÃO DE PÊRA	
requerente:	LEAL CABRITA e Ca Lda	
	ARQ.º	<i>Braz</i>
	ENGA.º	DES. ANTONIO BERNARDES